

MINI OPTIMA

EXPOSED



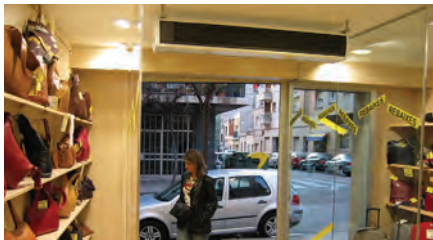
This stylish air curtain with its slim design and curved end panels, make it an unobtrusive addition to any doorway.

A micro-perforated inlet grille filters the air entering the unit, avoiding the need to routinely replace or clean internal air filters. All the inlet grille requires for maintenance is a periodic wipe or vacuum.

The Mini Optima is ideal for small to mid-sized premises such as shops, offices, restaurants and other public buildings.

An Advanced Pro controller, with built in sensors that intelligently monitor and control temperatures, is included. The wall mounted LCD display offers 2 fan speed selections and 3 heater stages for electrically heated units, or 2 speed fan selection for LPHW and air only units. 7 metres of control cable and an IR hand-held remote are supplied, as standard.

COLOURS AVAILABLE White RAL9016 (standard) Any RAL colour	MOUNTING OPTIONS Horizontal	MAX DOOR HEIGHT 2.2m - 2.8m	FAN OPTIONS AC fan	HEATING OPTIONS Electric LPHW Air only	LENGTHS AVAILABLE 1.0m 1.5m 2.0m
--	---------------------------------------	---------------------------------------	------------------------------	--	--



Air only

Model	Max mounting height m	*Airflow m ³ /h	Power/current fans 230V-50Hz kW/A	Noise level (@5m) dB(A)	Weight kg
OPT 1000 A	2.8	1500	0.080 / 0.41	35/50	17.5
OPT 1500 A	2.8	2150	0.117 / 0.53	36/51	25.5
OPT 2000 A	2.8	2900	0.160 / 0.82	38/53	33

Water heated

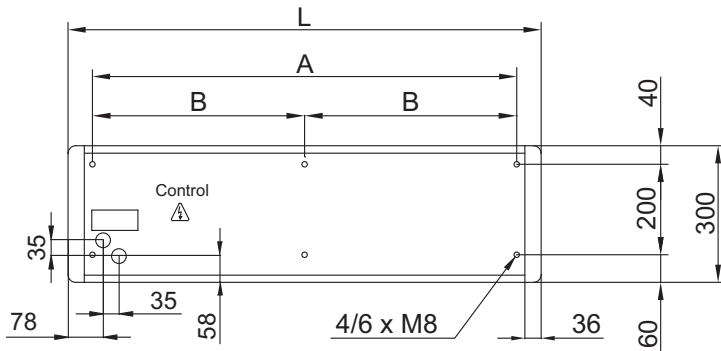
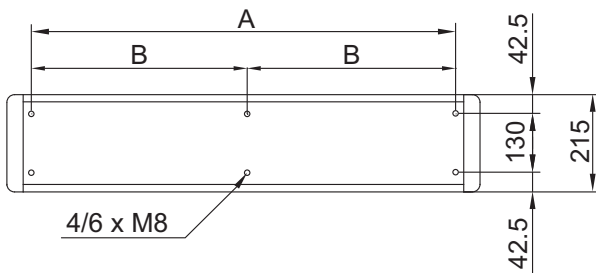
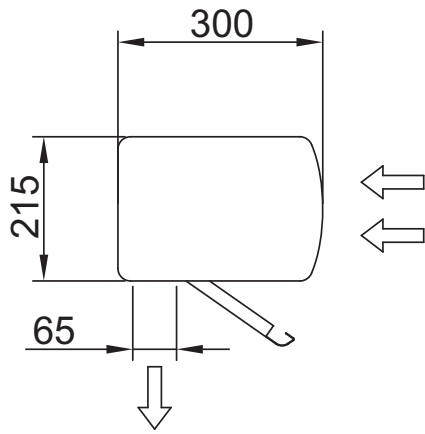
Model	Max mounting height m	Airflow m ³ /h	Heating capacity 80/60° kW	Water Drop Pressure Pa	Power/current fans 230V-50Hz kW/A	Noise level (@5m) dB(A)	Weight kg
OPT 1000 P	2.8	1400	8.2	7090	0.080 / 0.41	37/51	20.5
OPT 1500 P	2.8	2100	12.7	7200	0.117 / 0.53	38/52	27.5
OPT 2000 P	2.8	2750	16.7	6550	0.160 / 0.82	40/54	37.5

Electrically heated

Model	Max mounting height m	*Airflow m ³ /h	Electrical Heating Capacity kW	Electrical Heating Voltage V	Electrical Heating Current A	Power/current fans 230V-50Hz kW/A	Noise Level (@5m) dB(A)	Weight kg
OPT 1000 E400	2.8	1500	1.9/3.8/5.6	400Vx3	5.8/8.7	0.080 / 0.41	35/50	20.5
OPT 1000 E9	2.8	1500	3/6/9	400Vx3	8.7/13	0.080 / 0.41	35/50	21/5
OPT 1000 E230	2.8	1500	1.9/3.8/5.6	230Vx1	16.5/24.5	0.080 / 0.41	35/50	20.5
OPT 1500 E400	2.8	2150	3/6/9	400Vx3	8.7/13	0.117 / 0.53	36/51	27.5
OPT 1500 E230-6	2.8	2150	1.9/3.8/5.6	230Vx1	16.5/24.5	0.117 / 0.53	36/51	27.5
OPT 1500 E230-9	2.8	2150	3/6/9	230Vx1	26/39.1	0.117 / 0.53	36/51	27.5
OPT 2000 E400	2.8	2900	3.8/7.5/11.3	400Vx3	8.1/16.3	0.160 / 0.82	38/53	42
OPT 2000 E230	2.8	2900	3.8/7.5/11.3	230Vx1	24.5/49.1	0.160 / 0.82	38/53	42

Water heated: connection pipes 1/2" female. 2 rows coil. *tested to Amca 220-05

Layouts and dimensions



	L	A	B
OPT 1000	1050	940	-
OPT 1500	1550	1440	-
OPT 2000	2050	1940	970